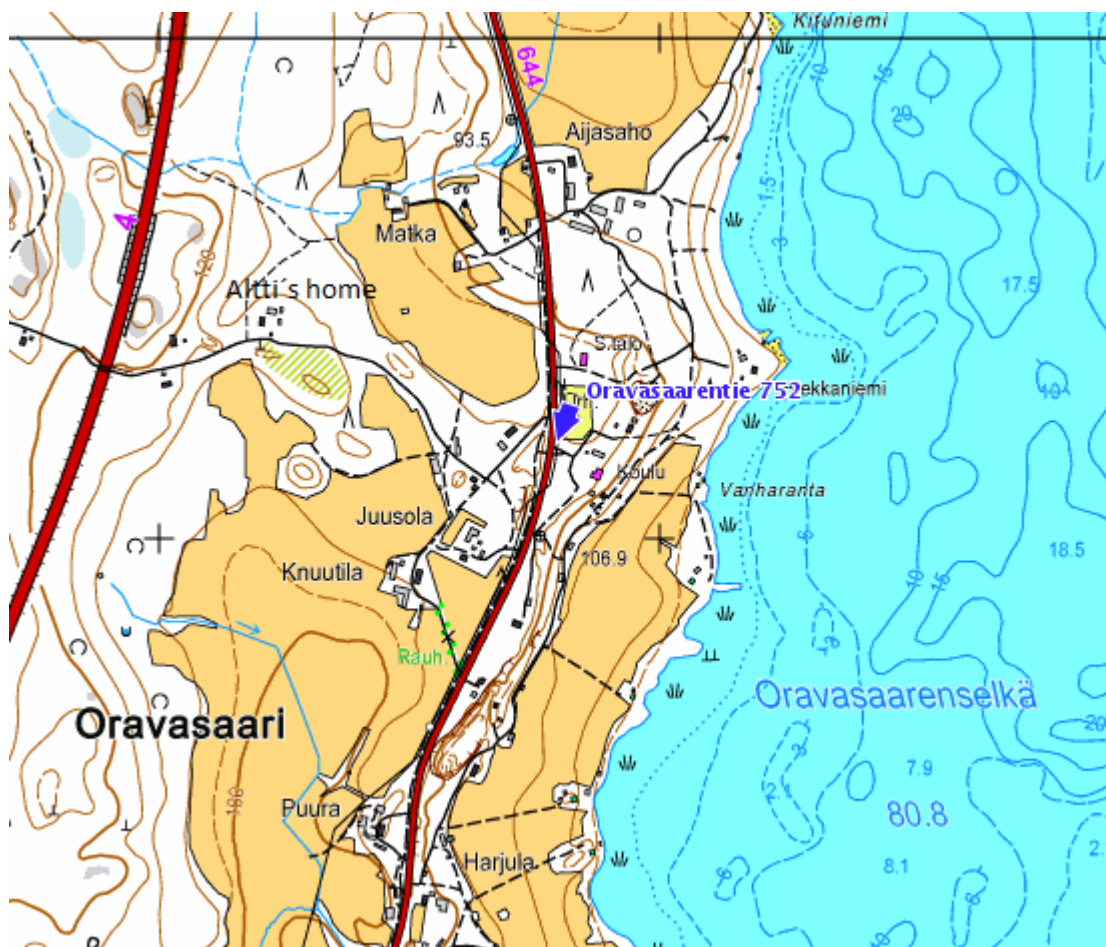


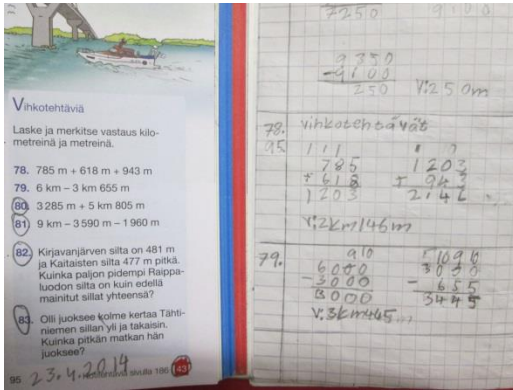


JYVÄSKYLÄ



Exercises

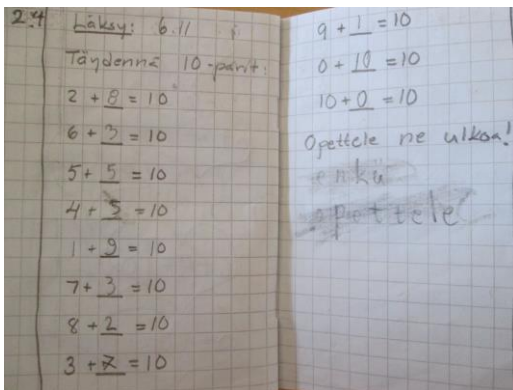
1. Where is the school? (koulu)
2. How deep is the lake Leppävesi?
3. How far does Altti live from school? 1:16 000
4. Mikko lives in Harjula, how far is it from school?
5. Who lives in Matka?
6. There are 2 main road in Oravasaari. What is the distance between them?



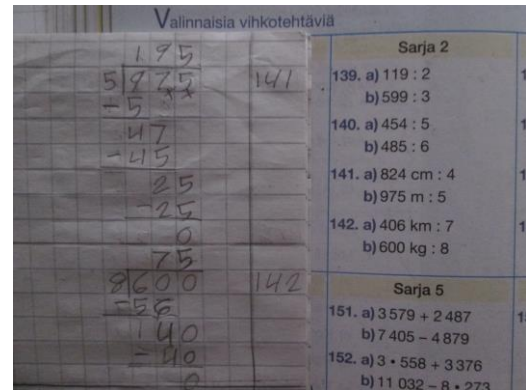
3. class (9 years old pupils)



2. class (8 years)



2. class (8 years)



4. class (10 years)